

## How to install PCIPORT card driver in WIN 7 system

### 1 Driver Installation

Upon WIN 7 system is powered on, the Plug & Play function in WIN7 system will find PCIPORT card. If this was the first time to insert PCIPORT card in your WIN7 system, then you will NOT be informed to install the driver. Because our driver is not embedded in WIN7 system, so WIN7 can not find and install driver for PCIPORT card automatically. When WIN7 find our card in hardware and could not find corresponding driver in system, WIN7 system do not install and ask us to install driver. WIN7 just specify our card as "Other devices" in "Control Panel".(NOTE: pre WIN7 system may inform us to install).

1) Now, we need to enter "Control Panel" "System and Security" "System" "Device Manager"



2)and we can find in "Other Devices" with one device "PCI Simple Communications Controller". There are yellow ! before this device to indicate "The drivers for this device are not installed".



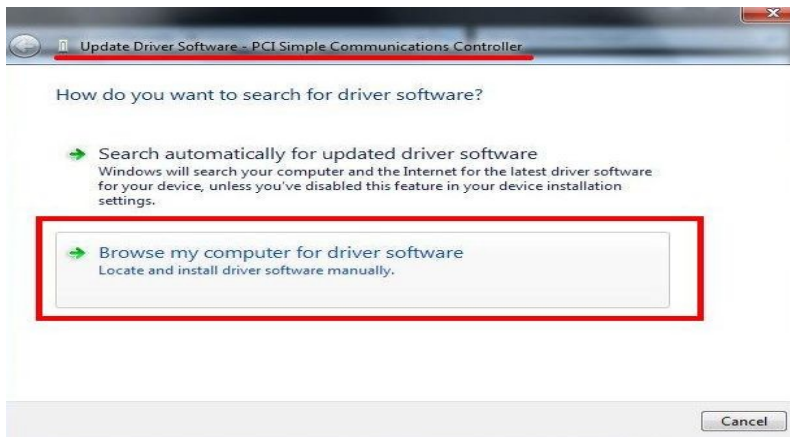
3) Please select this device and install PCIPORT driver.

A) Double strike in this device to enter "properties" screen.

B) Select "Update Driver"



**C) Browse my computer for driver software**



**D) Specify the path for our driver. Install this driver software anyway and always “NEXT”. Of course you always trust software from “RAYON Technology”.**

Please follow the instruction message to specify the driver location. WIN7 system will use same driver as WIN2000/XP/Vista system.

**CD:\UPCI\_card\P588U\WIN7\_2000\_XP\_2003\_VistaWin32**

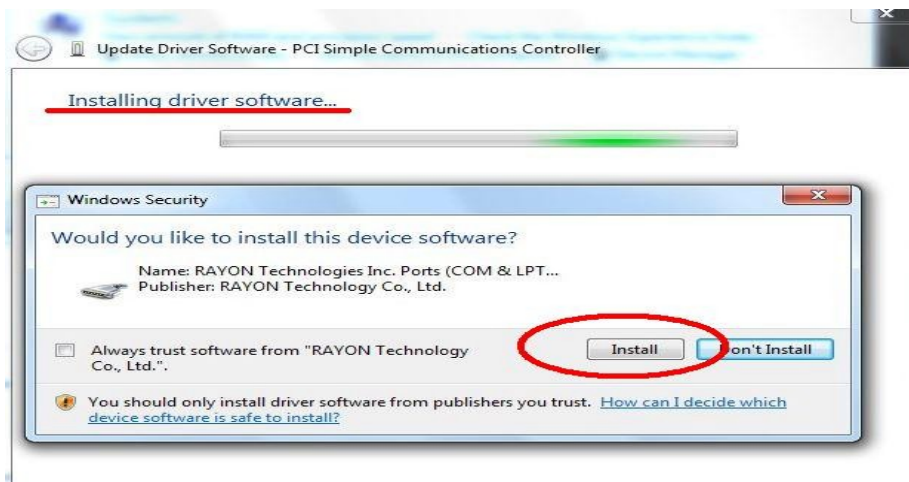
**For 64bit WIN7 system please use \Win64 directory.**





“software 1”

This is the PCIPORT card driver to install.



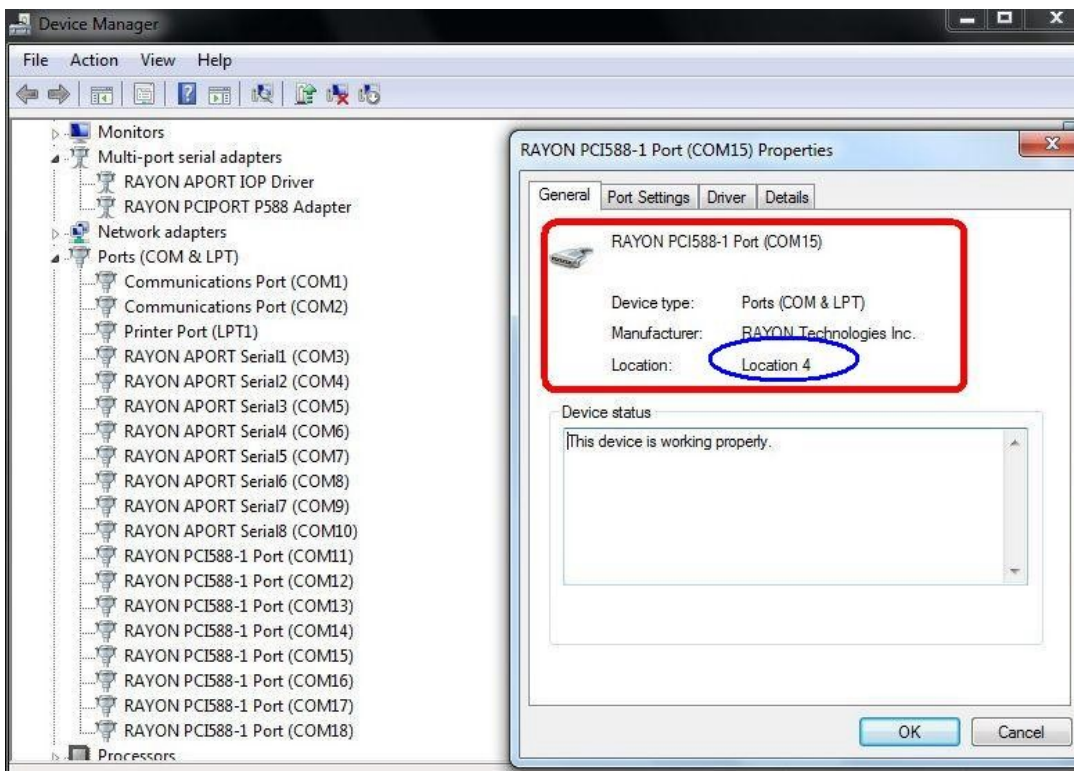
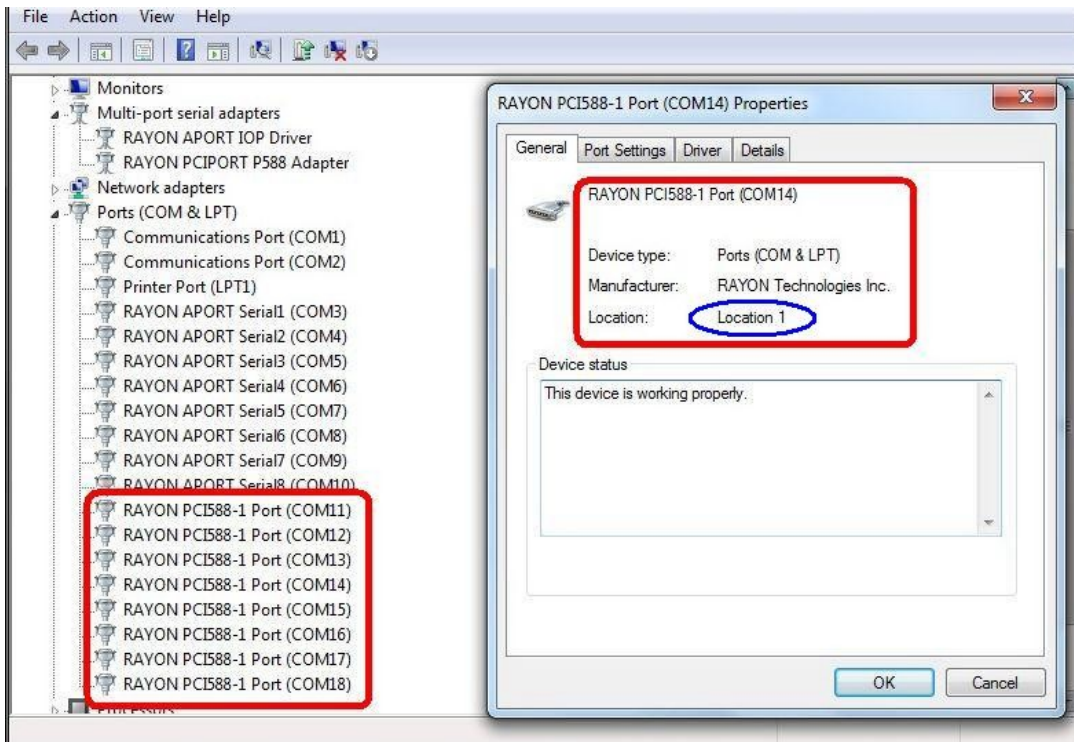
“software 2”

This is the PCIPORT port driver to install.

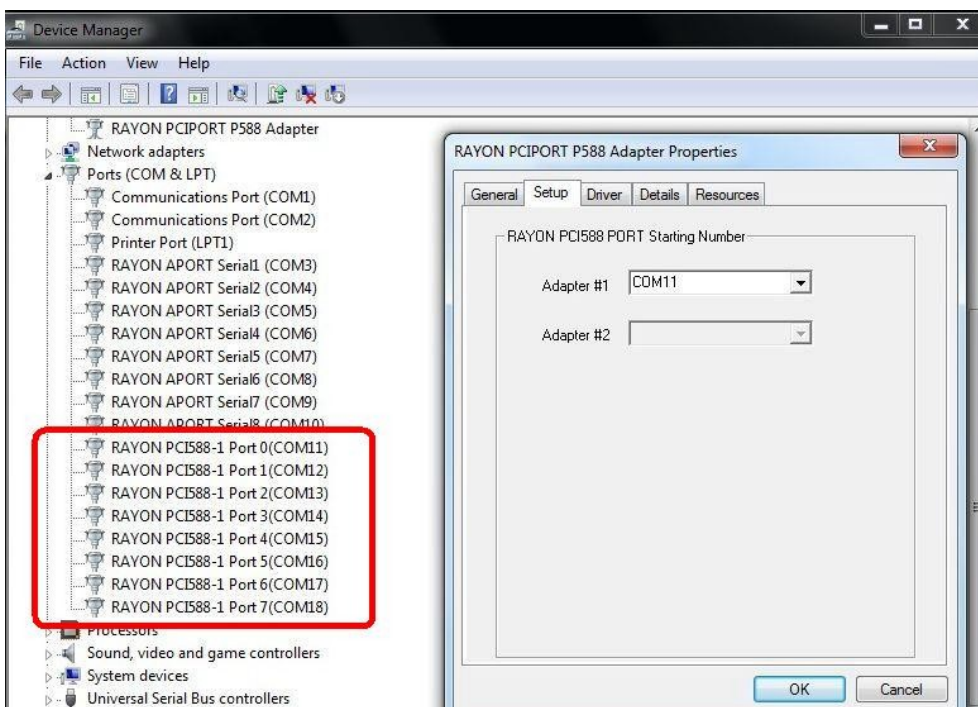
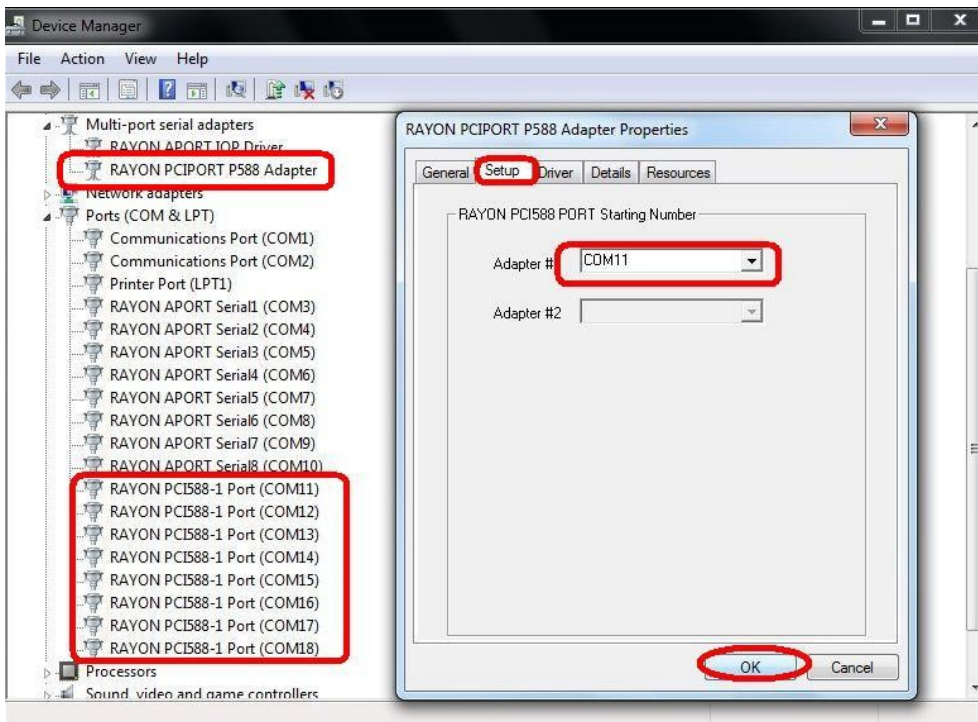


4) After driver installed, we may find extra COM ports generated.

But we may find the COM port number for each serial port do not have correct relationship with physical location. For example, we may have 8 serial ports in P588U card with physical name port A--H. In WIN2000, XP, Vista system we may have correct relationship for COM3--COM10 in port A--H. In WIN7 system we may have random COM port number for port A--H. It is not easy for user to know which COM port number is in which serial port.



5) Fortunately, we have SETUP function in PCIPORT card's driver to set COM port start number for serial port A--H. In "control panel" "device manager" you can select PCIPORT card in "multi-port Serial Adapters" and double strike mouse to enter "Properties" "SETUP" screen. Then you can modify COM port start number to other value. So we can have serial port A--H with corresponding COM port sequentially. You can have extra COM port with correct COM port number in next boot.



## 2. Other consideration

- a) we can install two PCI588 cards in one WIN7 system. There are one jumper JP1 in PCI588 card to set card number. The first card is jumper ON (inserted) and the second card is jumper OFF (removed). Please keep in mind to set different card number upon install two PCI588 cards.
- b) If there were any problem in driver installation procedure, please send Email to [rayon@ms1.hinet.net](mailto:rayon@ms1.hinet.net) or [info@rayontech.com.tw](mailto:info@rayontech.com.tw) to check with us. Thanks!